

Genomic Organization of a Diverse ACC Synthase Gene Family in Banana and Expression Characteristics of the Gene Member Involved in Ripening of Banana Fruits[†]

FONG-CHIN HUANG, YI-YIN DO, AND PUNG-LING HUANG*

Department of Horticulture, National Taiwan University, No. 1 Roosevelt Road, Section 4, Taipei 10617, Taiwan, Republic of China

The banana is one of the typical climacteric fruits with great economic importance in agriculture. To understand the basic mechanism underlying banana ripening, gene clones for banana ACC synthase (EC 4.4.1.14), a key regulatory enzyme in the ethylene biosynthetic pathway, were characterized. Genomic clones were analyzed by restriction mapping, and the data in conjunction with sequence comparisons with the previously isolated PCR fragments indicated that at least nine ACC synthase genes (*MACS1–9*) exist in the banana genome. Southern blot analysis showed they are located in different regions of the banana genome. Three lambda genomic clones (GMACS-1, -9, and -12) were completely sequenced, and gene structures of *MACS1* (corresponding to alleles of GMACS-9 and -12) and *MACS2* (corresponding to GMACS-1) were elucidated. The coding regions of these three genes were all interrupted by three introns. The size and location of introns are similar to the ACC synthase genes from tomato and *Arabidopsis*. Northern analysis showed that only *MACS1* expressed during fruit ripening and was inducible by exogenous ethylene treatment, which indicates *MACS1* is a significant member of the ACC synthase gene family related to ripening in banana fruit. The transcription initiation site of GMACS-12 containing *MACS1* was defined. There is a TATTAAT sequence located at position -31 to -25 that qualifies as a TATA box. The delineation of transcription unit in *MACS1* will facilitate the promoter studies for this gene and allow its specific functions involved in fruit ripening to be determined.

KEYWORDS: 1-Aminocyclopropane-1-carboxylate (ACC) synthase; ethylene; gene expression; multigene family

INTRODUCTION

Ethylene is one of the simplest organic molecules with biological activity. This hydrocarbon gas, known as the fruit-ripening hormone, profoundly influences the growth and development of higher plants. Ethylene production is induced during several developmental stages, including fruit ripening, seed germination, leaf and flower senescence, and abscission (1). It is also induced by external factors, including drought, wounding, chilling injury, elicitors, auxin treatment, and viral infection (2, 3).

It has been recognized that ethylene plays a crucial role in the initiation and development of ripening in climacteric fruits (4), while the ACC synthase (EC 4.4.1.14) is the key regulatory

enzyme in the biosynthetic pathway of ethylene (5). It is therefore important to understand how expression of the ACC synthase gene is regulated during fruit ripening. Cloning of its gene will open new horizons of investigation on the molecular mechanism of induction of the ACC synthase activity during fruit ripening. Furthermore, it is of great agronomical interest to be able to control fruit ripening and delay overripening for climacteric fruits.

In every plant species examined, ACC synthase is encoded by a multigene family in which each gene is differentially regulated by various environmental and developmental factors during the growth of a plant. For example, tomato has at least nine ACC synthase gene family members (6–9), which are differentially regulated by inducers such as auxin, fruit ripening, elicitors, and wounding. A multigene family for ACC synthase sequences has also been reported for zucchini (10), mungbean (11), rice (12), potato (13), carnation (14), tobacco (15, 16), lettuce (17), and *Arabidopsis thaliana* (18).

From banana, a typical climacteric fruit which has great economic importance in agriculture (19, 20), we have already isolated ACC synthase cDNA clones (accession numbers

* To whom correspondence should be addressed. Phone: 886-2-33664836. Fax: 886-2-23627053. E-mail: pungling@ntu.edu.tw.

[†] Sequence data for the genomic clones have been deposited previously in the GenBank libraries under the following accession numbers: GMACS-1 (AF056162), GMACS-9 (AF056164), and GMACS-12 (AF056163). Accession numbers of the ACC synthase PCR fragments from banana genome described in this article are as follows: Facs52 (DQ343866), Facs44 (DQ343867), Facs2 (DQ343868), Facs3 (DQ343869), Facs4 (DQ343870), Facs8 (DQ343871), and Facs10 (DQ343872).

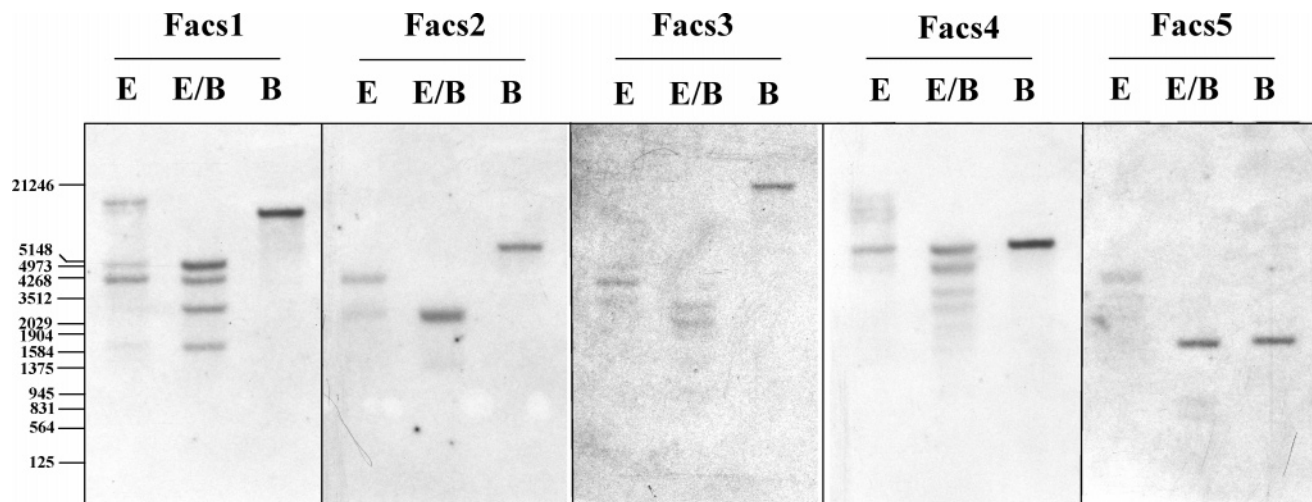


Figure 1. Southern analysis of banana genomic DNA. A 10 μg amount of DNA was digested with the indicated restriction endonucleases and probed with ^{32}P -labeled Facs1, Facs2, Facs3, Facs4, and Facs5. E, *EcoRI*; B, *BamHI*.

AF008941 and AF008942) corresponding to a group of genes (*MACS1*) which are expressed in ripening banana fruits. Thus far, many data show that ethylene, at least in plants, influences the expression of specific genes at the level of transcription (21–24). As a first step toward understanding the role of the ACC synthase multigene family in banana, we report in this paper the genomic organization and expression characteristics of the members of this family. Furthermore, we also present the complete nucleotide sequence and transcription start site of the *MACS1* gene, the location of possible *cis*-acting regulatory elements of its promoter, and a phylogenetic analysis of the ACC synthase genes from banana as well as from various other plants.

MATERIALS AND METHODS

Plant Materials. Aseptically maintained young plantlets of the banana cultivar “Hsian Jien Chiao” (*Musa* spp., AAA genome) were used to isolate genomic DNA. Prior to use, these plantlets were transferred to 15 cm plastic pots containing peat and vermiculite (1:1, v/v) medium. After reaching a height of 20 cm, the above-ground parts of plants were harvested, frozen with liquid nitrogen, and stored at $-80\text{ }^{\circ}\text{C}$. A sample of banana fruit “Hsian Jien Chiao” was taken from farm-grown plants and classified into seven stages according to the surface coloration (25). Intact, mature green fruit was treated with 1000 $\mu\text{L/L}$ C_2H_4 for 24 h and ripened at $25\text{ }^{\circ}\text{C}$ and then frozen with liquid nitrogen for Northern analysis.

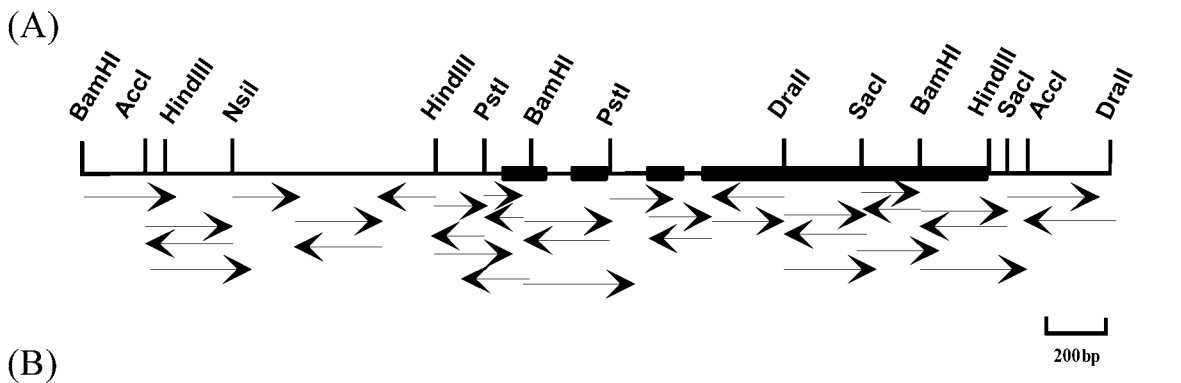
Construction and Screening of Genomic DNA Library. Genomic DNA was isolated from nuclei of young leaves and purified by equilibrium sedimentation in a CsCl gradient (26). A partial *Sau3AI* digest of the genomic DNA was size fractionated by electrophoresis on a 0.5% low-melting agarose gel. DNA fragments of 15–25 kb in size were cloned by insertion into the *BamHI* site of the EMBL3 vectors (27) and packaged with Gigapack II gold (Stratagene). The primary library, 2.5×10^6 plaque-forming units/mL in size, transfected into *E. coli* XL1-Blue MRA(P2) was screened by the method of Benton and Davis (28) with a ^{32}P -labeled pMACS-28 cDNA (accession number AF008942) insert. As the banana genome was estimated as 6.0×10^8 bp (29), 1.84×10^5 recombinant bacteriophages need to be generated and screened in order to achieve a 99% probability ($P = 0.99$) of having a given single-copy DNA sequence represented in a library of 15-kb fragments of banana genome based on the following calculation, where f is the fractional proportion of the genome in a single recombinant (30).

$$N = \frac{\ln(1 - P)}{\ln(1 - f)} = \frac{\ln(1 - 0.99)}{\ln(1 - [1.5 \times 10^4 / 6 \times 10^8])} = 1.84 \times 10^5$$

Therefore, approximately 5.25×10^5 (equivalent to 3-fold theoretical number) nonamplified plaques of banana genomic library was screened with ACC synthase gene-specific probes to avoid sampling variation and preferential cloning of certain sequences. Hybridization was performed overnight at $42\text{ }^{\circ}\text{C}$ in hybridization solution ($5 \times$ SSPE, $1 \times$ Denhardt’s reagent, 0.1% SDS, 100 $\mu\text{g/mL}$ denatured fragmented salmon sperm DNA, 50% formamide) (31). Hybridization filters were washed twice at room temperature in $5 \times$ SSPE, 0.1% SDS for 15 min each, then two times in $1 \times$ SSPE, 0.5% SDS at $37\text{ }^{\circ}\text{C}$ for 15 min each. Phage DNAs isolated from the positive clones were examined by polymerase chain reaction (PCR) with primer sets, ACS1 (5′-AACGAATTCATA(T/C)CAG(A)ATGGGT(A/C/G)T(C)T-3′) and ACS2 (5′-AGGGGATCCA(G)TGA(G)TAA(G)TCT(C)TGG(A)AA-3′), corresponding to highly conserved regions of ACC synthase amino acid sequences registered in the database from various plant sources. PCR was performed in a thermocycler using the conditions recommended by the manufacturer. The PCR parameters were 1 min template denaturation at $94\text{ }^{\circ}\text{C}$, 2 min primer annealing at $50\text{ }^{\circ}\text{C}$, and 2 min primer extension at $72\text{ }^{\circ}\text{C}$ for 30 cycles. The DNA sequence was determined by the dideoxy-chain-termination technique (32). Sequence data were analyzed using the Vector NTI Suite 6.0 software.

Determination of Transcription Initiation Site. Primer extension analysis was performed according to Bond and Davidson (33). A 5′-end-labeled 30 mer synthetic oligonucleotide, acc1 (5′-TGATTTGGGT-GCTCCTCGCGTAGATCCTC-3′) (0.2 pmol), complementary to nucleotides +77 to +106 of the GMACS-12 gene (Figure 2), was hybridized with 2 μg of poly(A)⁺ RNA from mature green or ripening fruit at $55\text{ }^{\circ}\text{C}$ for 6 h. The primer–RNA hybrids were incubated with 10 units of reverse transcriptase in 20 μL of a reaction mix (50 mM Tris-HCl (pH 8.5), 40 mM KCl, 8 mM MgSO_4 , 0.4 mM dithiothreitol, 1 mM of each dNTP) at $42\text{ }^{\circ}\text{C}$ for 1 h. For determination of the nucleotide sequence near the transcription initiation site, the sequencing reaction of the *HindIII/BamHI* fragment of about 400 bp in size that contained about 200 bp of the promoter region of GMACS-12 was carried out with the same primer. The primer extension product was analyzed on a 6% (w/v) polyacrylamide sequencing gel. S1 nuclease analysis was performed as described by Buchman et al. (34). [5′- ^{32}P]-acc1 primer was hybridized to the M13 mp19 ssDNA of the 5′ proximal *HindIII/BamHI* fragment from GMACS-12 and extended with six units of Klenow fragment (31). The reaction was digested with *MboI*, which cleaves at position –120 (Figure 2). The 225 nt single-stranded probe was purified by denaturing polyacrylamide gel electrophoresis (31) and used for S1 digestions with 2 μg of poly(A)⁺ RNA from mature green and ripening fruit. The protected fragments were separated on a 6% (w/v) polyacrylamide sequencing gel.

Genomic Southern Blot Analysis. Genomic DNA was extracted from banana seedlings as described by Dellaporta et al. (26) with modification. Ten micrograms of DNA was digested with the indicated



(B)

ggatccatgaataggccactgtgacttcgactttgatgatctgtaccatgagctgtgtaatacgcgttcttgatgacgactcccgtagaacccatcaatatagg -1441

ttgagacgaaataaacatcggttaagcagacaacatagctacagtagatcatgatagaacaattcgaataataagacatacaaaaaaatttgggtatagactcgatataaaaactaaaga -1321

tatttcttcaatctatataatacaatttfglaagcttccaaaagagatagatttgggtcaactataatgacctccgacaaagtagaatgacctatcagaatctcagccctaca -1201

aacaacccaatcccaatcatcctatgatcttagtgaagtagcaaatcccaatcacaatttaaatagccagtcatttcaaacatgaagatcatgcttttatgcttcttctttt -1081

ggtagaagagttaatgagatccacaaaaccttaagaggatgcatataagccaat taaat taaaccccatatgtataaaatccaat tgcgaaggcaaatcgaagtaccgatacgtt -961

tctatctgacccgataatattctcttttaagatgataaagaatataagcttaataatgggagggcaatttcccgactatcacaatccagtcgatacgttaaaccttaggtt -841

ggtgatggagatgttaatcgtctcagcagatcgaatatatacaatatacagcagaaaagtacacatgacacgtcagttatctataaaccatagctttgatctcagctcatgtaacc -721

ctctctgacatttattatcatcttaatttattatcatatattataataaaaagggttttttagtgggagttttgactgatataatttattttaaattttaaagcttgaatgaaatttaaac -601

tcttactaacctaaatattgattgaaatagatgcttcgacacaat tttctacgtgatcatggtttaaattttgacctcttaaacacctcagcttgagtcaaacctcgaaactcgaaa -481

gtggacctccgttagactcctttaaactatgttaaacaacttgaacttaattttagactcaatcaaaatcagactggattgagcctaaatggatcctaaatataagaaaaaacattgtgaa -361

tcttctctcttcgcaatagcatgtctcagatgagatgaagtttacaagaagcggcgacaaatttgttttgggataaataattctgtcttacaatataagtagagttcgagtcgaaa -241

gcgactcccagttcggaacacgctcattgttgcggccaacactgaagcttccatttgtctcactctgcagatgtacggccgacccatcgccaaatcagctccatgagggacacgctgcc -121

ggatcagctcggtttctatgctccttctttccagcctgaagctcctctttgttgcaccttgggatgatgaatggctctcgggattggccatttaattgagtcggaaatcgactctgcaa -1

ATCGCACAGCTGCTTCTCTCTCTCTGCTCGCTTCAGCTTTCCGGTACGTACCTGAGATAACGGGTACACATGAGGATCTACCGGAGGACCCAAATCAGCAGATCCTCTCTC +120

M R I Y G E E H P N Q I L S

GGATCGCGACCAAGACGCCATGGGAGAACTCCCTACTTCGATGGGTGGAAGGCCACTGAGAGAAGGATCCTTTCCACCTCACCGACAACCCACGGGGTCACTCAAATGGGACTCG +240

R I A T N D G H G E N S S Y F D G W K A Y E K D P F H L T D N P T G V I Q M G L

CAGAAAACCAAGttagagttcctctcagttggtgatgatgaatggacacatgccttccgtcaattgccaactcctcggggtgctaatcaatctgatatggtgggtttgggtcttcttccctca +360

A E N Q

gCTTTCCTCGACTTGTATCCGAGACTGGATGAAGAAGAACCACAGCCTTCGATCTGCACCGAAGAAGGGTCTCAGAGTTCAAAGCAATTGCCAACTTTCAGACTATCATGGCTCC +480

L S L D L I R D W M K K N P Q A S I C T E E G V S E F K A I A N F Q D Y H G L P

AGCCTTCGAAAGttaatgatttcaacccaanaacgcagcgtcagctgcttgcctcactgtccaagtacatcagctccaatatagataaagctgggactgacagccacttacggcc +600

A F R K

cgagccctgctctcacccctggataagggataagctaatgattggtggtgatttgcgtgacacgcgacgCCATCGCCAGTTTTCATCGAGAAGGTTGAGAGGGGGACGACCCAGATTGACCC +720

A T A Q F M E K V R G G R A R F D P

AGACCGCATGTTGATGATGGCGGTGGAGCCACCGCGCTCAGGAAACCATCGCCCTTTGCCTGGCTGATCCTGGCGAGGCCCTTCTTGATCCAAACCCATATTATCCGGGtaagattttag +840

D R I V M S G G A T G A Q E T T A F C L A D P G E A F L I P T P Y Y P G

gtgtaactaactactaggttcttttaccggcagagatctaatggcatctgcatggtttccagATTTCGATCGAGACTTCCAGTGGAGGACAGGAGTTCAGCTCCTCCCATTCAGTCCCA +960

F D R D F R W R T G V Q L L P I H C H

CAGTTCACAAGTTCAAGTACCCCAAGCCGACTGGAGACTGCTTACAGGAAGGCTCGAAACTCACACATTAGAGTCAAAGGAATACTGGTGAACCAACCCATCGAACCTCTGGGAC +1080

S S N K F K I T Q A A L E T A Y R K A R N S H I R V K G I L V T N P S N P L G T

AACCTGGACAGAGACGCTGAGAACCCTAGTCAAGCAGTTCAGTCAACGAGAAAAGGATGACATGGTGTGGCAGAGATCTTCTCCGGAACCGCTTTCGACAAGCCGAGTTCAGTGGAGCT +1200

T M D R E T L R T L V S F V N E K R M H L V C D E I F S G T V F D K P S Y S V S V

CTCCGAGGTGATCGAAGACGATCCCTACTCGGACAGGATCTGATTCACATCCXCTACAGCCTCTCCAAGGACCTGGXGCTCCCTGGCTTCCGGCTCGGCGTATATACTCTACAACGA +1320

S E V I E D D P Y C D R D L I H I A Y S L S K D L G V P G F R V G V I Y S Y N D

CGCGTGGTCACTGGCGAGGAAGATGTGGAGCTTGGACTGGTCTGGCAGACGACAGCCTCTCCCTTCATGTTGGAGACGAGGAGTTCACCAAGGATTTCITAGCCAGCAG +1440

A V V S C A R K M S F G L V S S F L V S Q H L L A S M L G D E E F T T S F L A T S

CCGACGAGGTTGTCGGCGGCGCAGGCTTCTTACCGACCGCTCAAGCAGTTCGGATTCATGCTTGGACCGCAACCGGCGCTGTTCTGCTGGATGGACTTGAAGCCGCTGCTGAA +1560

R T R L C G R R R V F T D G L K R V G I H C L D G N A G L F C W M D L R P L L K

GGAAAGCAGCGTGGAGCGGAGCTCCCGCTGTGCGGCTGATCAACAGACGAGTGAAGCTCAACATCTCCCGGCTCGTCTTCCACTGCTCGAGCCCGGCTGCTCAGGCTGTGCTT +1680

E A T V E A E L R L W R V I N D V K L N I S P G S S F H C S E P F R V C F

CGCAACATGGACGACCGCCATGAAGATAGCGCTGAGGAGGATCGAGAGTTCGTGTACCGGGAGAACGACCGCGCTGTGCAGCGGAAGAACAAGAGGAGTGGGACGAAGCGCTGCG +1800

A N M D D T A M K I A L R R I E S F V Y R E N D A A V Q A K N K R R R W D E A L R

GCTGAGCTTGCTCGTGGAGGTTTCGAGGATCCGACCATCATGACACCACATGATGCTCCCACTCGCTCTGCTTCAAGCCGCCACTGAAACATCGACGCGCGGTGCTGATGAT +1920

L S L P R R R F E D P T I M T P H L M S P S H S P L V Q A A T *

CAAAGAAGTTAAATACCCTGTGATATGTTGCACATTTCTTTGTTCTTTGAATTATTTATTTATTTATTTTGGAAAAAATGGATTGAATGTTCCCACTAAGGATATTAGATTGTTGT +2040

TCGGTCTCATTATGTTTATAGGAAACGAGGATAGAATTGCTTGCCTCTCTCTTTTATATATGAAATATGTTGCAATTggcctaaagcttatttgatgacatttaattcaacagaca +2160

aagccttcaatataattgcttcgacacaaatgcagagactcaactcatggatttgttacactcattttgtcaaaaattagtcaggtttaccgtagactcagttttaaaggttataaattggt +2280

tcttattcaagttatcagttcaattgatcgatttattttaaagcaatataattttaaataaaattctttaaattggttttaaactcagttatcaaacatcagttgatcaggaaaagttatca +2400

ttagtcttactcaactcgacatggtcttactcaactgcataggaatgctcgagatgtctctgagataaaaaacattgtcttctgtagaaaaatgctcattctcataaagtgaaata +2520

tcatgctccgaggtgctcacctgaagatgaggttagaagggtttctcgacatgctcctcaacgctcaagatag +2596

Figure 2. (A) Partial restriction map and sequencing strategy for GMACS-12. The protein coding sequence is indicated by the solid bars; 5' and 3' flanking sequences are indicated by lines. The arrows indicate the extent of each sequence determination. (B) Complete DNA sequence of GMACS-12 and its flanking genomic region. The sequence of the mRNA transcribed by the gene is presented in capital letters. The remainder of the sequence is shown in small letters. The derived amino acid sequence is presented in the one-letter code below the DNA sequence. The transcription start site is boxed; CAAT box, TATA box, and three potential polyadenylation signal sequences are double underlined. The star identifies the stop codon. Several sequences found in the 5' flanking region that may be involved in gene regulation are underlined.

restriction enzymes, separated by a 0.7% agarose gel electrophoresis, and then transferred onto a nylon filter (Hybond-N, Amersham). Blots were baked under vacuum for 2 h at 80 °C. DNA gel blots were probed

with ³²P-labeled PCR ACC synthase gene fragments (Facs) amplified with ACS1 and ACS2 as primers from banana genomic DNA: Facs1 (nucleotides 2100–2293 of AF056162), -2 (DQ343868), -3 (DQ343869),

Table 1. Genomic and cDNA Clones and Differential Expression of ACC Synthase Multigene Family in Banana

gene class	genomic clones	PCR frag-ments	cDNA clones	response to fruit ripening	ethylene inducible
MACS1	GMACS-3, -5, -9, -12, -14	Facs5	pMACS-25, 28	+	+
MACS2	GMACS-1, -10, -29, -31, -34, -36	Facs1		–	–
MACS3	GMACS-16, -27, -28, -52	Facs52		–	–
MACS4	GMACS-30	Facs44		–	–
MACS5		Facs2		–	–
MACS6		Facs3		nd ^a	nd ^a
MACS7		Facs4		–	–
MACS8		Facs8		nd ^a	nd ^a
MACS9		Facs10		nd ^a	nd ^a

^a Not determined.

-4 (DQ343870), and -5 (nucleotides 1788–2005 of AF056163) separately. Hybridization was performed overnight at 42 °C in a solution that consisted of 5 × SSPE, 0.5% SDS, 5 × Denhardt's reagent, 250 µg/mL denatured fragmented salmon sperm DNA, and 50% formamide. The membrane was washed twice with 5 × SSPE and 0.5% SDS at room temperature for 10 min each and then washed once with 2 × SSPE and 0.5% SDS at 65 °C for 15 min. Autoradiography was performed at –80 °C using Kodak XAR-5 film and an intensifying screen. Exposure times for blots were on the order of one or more days. The PCR fragment was labeled to high specific activity with ³²P-dCTP by random priming (35).

Northern Blot Analysis. Total RNA isolation was carried out by the method of Taylor and Powell (36). After glyoxylation in the solution (50% DMSO, 10 mM Na₃PO₄ buffer pH 7.0, 1 M deionized glyoxal, 25 µg of RNA), total RNAs were separated on a 1% agarose gel electrophoresis and transferred onto nylon membrane (Hybond-N, Amersham). The membrane was hybridized and washed as described in Southern blot analysis.

RESULTS

Isolation of the Banana ACC Synthase Genes. Screening a lambda-EMBL3 banana genomic library with the pMACS-28 cDNA as a probe under high stringency hybridization conditions led to the isolation of 29 lambda genomic clones. According to the restriction mapping for 29 genomic clones, 16 representative clones containing complete gene body and promoter sequences were chosen for further characterization. The data showed they can be grouped into four classes of genes: *MACS1* with five overlapping genomic sequences (GMACS-3, -5, -9, -12, and -14), *MACS2* with six overlapping genomic sequences (GMACS-1, -10, -29, -31, -34, and -36), *MACS3* with four overlapping genomic sequences (GMACS-16, -27, -28, and -52), and *MACS4* with one genomic sequence (GMACS-30). The 16 clones were partially sequenced, and the data showed that genes from the same class were slightly different from each other, which may be due to the triploidy nature of the banana genome.

To determine whether these four classes of genes encode ACC synthase, phage DNAs isolated from the clones were examined by PCR with primer sets ACS1 and ACS2. The PCR fragments were sequenced, and their sequences were compared with the previously isolated and database-registered PCR fragments (Facs) from banana genomic DNA: Facs1 (nucleotides 2100–2293 of AF056162), -2 (DQ343868), -3 (DQ343869), -4 (DQ343870), -5 (nucleotides 1788–2005 of AF056163), -8 (DQ343871), -10 (DQ343872), and -44 (DQ343867). The data show that *MACS1* corresponds to Facs5, *MACS2* to Facs1, and *MACS4* to Facs44 (Table 1). However, *MACS3* is newly discovered, and its PCR fragment was named Facs52 (DQ343866). Moreover, *MACS1* also corresponds to the previously isolated

cDNA sequences pMACS-25 (AF008941) and pMACS-28 (AF008942).

Genomic Organization of the ACC Synthase Genes. To verify the organization of ACC synthase genes in the banana genome, Southern analysis was performed at high stringency with Facs1, -2, -3, -4, and -5 (Figure 1). The data indicated that they are located in different regions of the banana genome. The blots probed with Facs2, -3, and -5 all yield a single band on each lane, which indicates that these three genes exist as single-copy genes in the banana genome. However, several bands were observed in *EcoRI* and *EcoRI/BamHI* digests on the blots probed with Facs1 and Facs4, which indicates that an additional two or more genes are homologous to Facs1 and Facs4 exist in the banana genome.

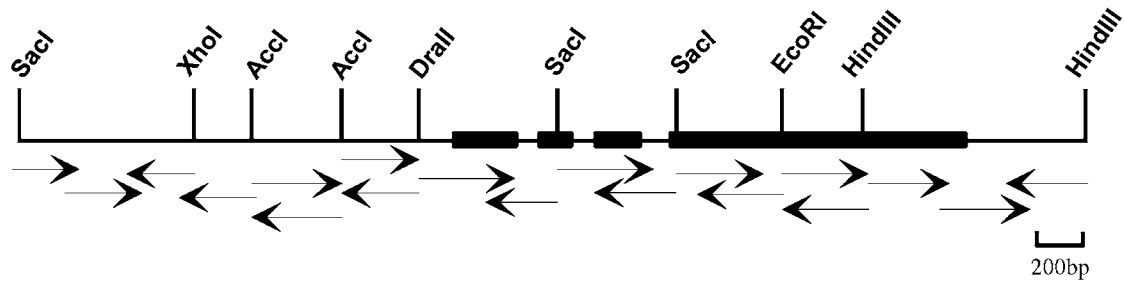
Gene Structure and Organization of *MACS1* and *MACS2*.

Three lambda genomic clones, GMACS-1 (AF056162), GMACS-9 (AF056164), and GMACS-12 (AF056163), were completely sequenced. The sequences of GMACS-9 and GMACS-12 are highly conserved because they belong to the same gene class (*MACS1*). The coding sequences of GMACS-9 and GMACS-12 are 100% identical to pMACS-25 and pMACS-28, respectively. The sequence of GMACS-12 spanning 1548 bp upstream from the initiation codon and 702 bp downstream from the stop codon is presented in Figure 2. GMACS-9 contains 1897 bp upstream from the initiation codon and 726 bp downstream from the stop codon. Comparison of the 5' sequences (–1 to –1400 bp) of these two genes revealed significant similarity (93%). The sequence of GMACS-1 includes 1958 bp of 5' and 841 bp of 3'-flanking regions (Figure 3), and the identity to GMACS-12 is 53.2% at the protein level and 56.2% in the nucleic acid of the transcription region. The promoter of GMACS-1 does not show high similarity to GMACS-9 or GMACS-12 in general, but it does show significant similarity (90–100%) to both in several short sequences (6–20 bp) of the 5' region. Besides, these three genes all contain four exons and three introns, which are all less than 300 bp long. The splice junction sequences in these three ACC synthase genes show a high degree of conservation.

Determination of Transcription Initiation Site. We have determined the transcription initiation site of GMACS-12 containing *MACS1* both by S1 nuclease analysis and primer extension using reverse transcriptase. Figure 4 shows that the probe for S1 nuclease analysis protects RNA isolated from ripe fruit but not from green fruit. Primer extension analysis gave similar results. Although primer extension yielded three bands, the strongest one corresponds to the result of S1 nuclease analysis, indicating that the initiation site of GMACS-12 is the base adenine at 104 bp upstream the translation start codon ATG. There is a TATTAAT sequence starting at position –31 to –25 (Figure 2) that qualifies as a TATA box, and a potential CAAT box was present at position –128 to –125. The 3' end of the gene was determined by comparing its nucleotide sequence with the nearly full-length cDNA, pMACS-28. Moreover, comparison of the 5'-untranslated region (+1 to +74) between GMACS-9 and GMACS-12 revealed that GMACS-9 has three bases (CTT) more than GMACS-12 (Figure 4). These data explain why primer extension yielded another two bands. The upper band may result from the expression of GMACS-9, which would indicate that the initiation site of GMACS-9 is also adenine.

Expression Characteristics. To understand how the members of this gene family are involved in fruit ripening, Northern analysis of six genes (*MACS1*, -2, -3, -4, -5, and -7) was performed with RNA isolated from banana peel tissue at

(A)



(B)

gagctcatcgaggggttgaagaagctttacaacagagaaggaatggcagagtagccgaacattaccctcgagaaatctcggaaagcaagaggaagagcagaagggacagagtcac 120
 gtaftgagtgagggcagcccatatggatactggaagcccatctgccatctgatctcatccgatctctgtgtgctgtgcagtgtctgtgggggaactcgcaatggaacacttgccat 240
 tctccaactcaagtcattctcatctccatcccgtagaggagagcatcaaatctgttctatgtcgaacgaagaggctacaacatcaaatgctgtgtgatgtcaaacaggtggaagt 360
 cctgcttggccgacagatgtccatccggggaagacaatctcaactcatgatctggcagaggaagaaacaactgcccaacatctgtggactccacgatactatgaacgcgtggatcatt 480
 ttccgatccacaccctcagctttagatgtatgtgtgcttgaagtgaatatagttagcgaataagaacaatagacaacaagaagggtctatttcccttaagtagaagcaaccatg 600
 gatccctcgggttcgatccaagtggtttaggaccgatgggtgcaccaactgttaacctcaagagggatcatgttggaaaatcatttccgatttcgatcttcatcaaattagtgc 720
 ggaacaacatccgactcactcagcctctcgagcaataatcgaatttcttatgtatataataatgaaatcaaatgaggttaatccatgatccacatfactacttaagctagaggtgt 840
 ttcatatagttgctcctaaaaccgctttaggcttcaataatgagggtgttctcaccagcttgaccctaaatttctgtttatagagtgagtgagcaatttcgatctattctccggta 960
 ctgatcaggactgtgtggttgccttacaagctgtgggtaaaagctctgactgagcttaacaagcttgactctccgagcaataagccatcgactgtctgtccatgcaacttctctc 1080
 gccctggtttaattagcttcaatttctccacttgcctccgatgagtcacaacgacagcctttagtggttccaagtccttctctgttaactcagaccccccccaatgtgactcttaa 1200
 ctcagagccaggaggactcgtgatcttctcctcctgcatgctgttaattatcatctgtttatgagacaattgacatataattactccattgcatcagccttagcaagtagctaaaact 1320
 tgcactgccatgcaagccagcctctgtttgtatatttctatggaggactacagagaggatgctgactgatacagatgattatattatataataataatgggtatccagccta 1440
 agcgtacacccaccctcctcggaggagcctctgggtgaccgtgccatgcagggatctggatgatgttaacagagggagccgggtgtgctggagcaagcagagatgggtgttagctcgggtg 1560
 gtcttagtttccagatcaactaaacatgacatccgctccattctgacagctggaaagctgcaataatctgtatctctggatgtttttagtattcttcccttcaataataaactagag 1680
 ggtaagcaggctctctgtccaacatcagggccagcttagattttagtctggcagggtgatactcaaatgtctcaatgaaactaaatccagaccatctatctgtctgttaaaaacaatcc 1800
 gtgattgttacttcgaggattctataaaatgacctctcctccacctccaagcaccacaataatct 1920
 acatacagcgtctctcaatctctctcagcctaccagaATGAATCAGATGCTGCTCTCCAGAAAAGCTGCATGCAACATCCATGGCAGGACTCCTCTATTTCTGGGGTGGCAGGAGT 2040
 M N Q M L L S R K A A C N I H G Q D S S Y F L G W Q E
 ACGAGAAGAACCCCTATGATCCAATCACTAACCCGACAGGGATCATTAGATGGTCTCCGAGAGAACCAGGtggttctctcactcagacaagttctctcactcaagtcacttgtgac 2160
 Y E K N P Y D P I T N P T G I I Q M G L A E N Q
 agtaactaataataagccctctgcttcatgcttcagCCTCTGCTTTGATCTCATGGAATCGTGGCTTGAGAACCATCCGACCCAGCTGCATTCAAGAAAGATGGAGCACTACTATTCCG 2280
 L C F D L I E S W L E N H P D P A A F K K D G A L L F R
 GGAGCTCGCTTTGTTCCAGGACTACCATGGCTTGCAGCCTTCAAGCGTgtaagtcataaactaaactaaatctaccgggatatacagaaggatcactcattctcgcataataca 2400
 E L A L F Q D Y H G L P A F K R
 acagaatctgctgggttactaattgagtcagtcgcccaatgcatacatctgcagGCATTGGCTAAATACATGGGAGAAGTAAGAGGAAACAAAGTAGCTTTCGATCCCAACAGGCTCGCTCTCA 2520
 A L A K Y M G E V R G N K V A F D P N R L V L
 CGGCTGGTGTACTTCTGCCAATGAGACTCTCATGTTTGTCTTCCGCAACCTGGGAGAAGCATTCCTTCTGCCCTACTCCATACTACCCAGGtagtacacatccacaacagagcctgtgc 2640
 T A G A T S A N E T L M F C L A E P G E A F L L P T P Y Y P G
 gaccaattactctaccatgcacgcgatcggttccatgacttgaattgccatggtagacactcacttctccatgtgtcctgacagATTCGACAGAGACCAGCAATGGCGAACCCGA 2760
 F D R D R K W R T G
 CGGAGATCGTTCCTCATCCATTGTTTCGAGCTCTAACCGCTTCAGGATCACAAACCGCCCTGGAAGCTGCATACCAAGATGCCGAGAAGCGTAGCCCTCAGAGTGAAAGGTGTCTGTGTG 2880
 A E I V P I H C S S S N G F R I T K P A L E A A Y Q D A Q K R S L R V K G V L V
 ACCAACCCTCAACCCATTGGGACGACGCTGACCCGACGAACCTGCAGCTTCTGTGCTTCCGCAAGGACATCCATCTCATCAGTGACGAGATCTACTCAGGACCAAC 3000
 T N P N L P T L T R H E L D I L V D F V V S K D I H L I S D E I Y S G N
 TTCGACTGGCCGGGTTTCATCAGCATGTCAGAGGCCACAAAGGACAGGAACAACGCTCCCATCGGATTCACATCGTGTGCAGCCTCTCTAAAGATCTCGGCCCTCCAGGTTTTCGTGTC 3120
 F D W P G F I S I A E A T K D R N N V S H R I H I V C S L S K D L G L P G F R V
 GGTCAATCTATTCCGAGAATGAAGCAGTCGTCTGCTGCTACTAAGATGTCAGCTTTGGGATGGTCTCTCTCAACCCAGTACCCTCCCTCCGGCGTGTGTTATCCGACAAAGAATTC 3240
 G C A I Y S E N E A V V S A A T K M S S F G M V S S Q T Q Y L L A A L L S D K E F
 ACCATAAGTACTTCTCGAGAATCAGAAGAGACTCAAGAGAGCGCACAGCATGCTTTCGAAAGACTGCGCAGGATCGGGATCGGGTCTTGAAGGAAGTGGCGGCTTGTCTGCTGG 3360
 T D K Y L L E N Q K R L K E R H D M L V E G L R R I G I G C L K G S A A L F C W
 GTGGACATGAGACACCTGCTGAAGTCCAACACCTTCAAGGAGAGATGGAGCTGTGGAAAGATAGTGTATCAGTGGGACTAAACATCTCGCCGGTTCCTGCTGCCACTGCGAGAA 3480
 V D M R H L L K S N T F K G E M E L W K K I V Y Q V G L N I S P G S S C H C D E
 CCGGGTGTTCGGGCTGCTTCGCTAACATGTCCGAGGACACCTAACCTCCGCTCAGCAGCGCTTAAAGCTTCTGTGACTCCGGCATTCGGGAGTTCAGGACTGACTCCGGCCAT 3600
 P G W F R V C F A N M S E D T L T L A M Q R L K S F V D S G D C G S H D S G H
 CAGCGCCCCAGAAAGCCATTCTTGACCAAGTGGTCTCCGCTTGTGCTCCACCGATCGCAAGTCCGAGCGATGAtaacaccggatgctgcagcgaatgacagatgatcattctttac 3720
 Q R P R K P F L T K W V L R L S S T D R K S E R *
 atttttacgcaaacagcagatgtttcttctcctcgtgtctttttgtcttggatcagcagatctgtctgtttttttagtgcccaagccttcattgatcagagagatgtttcacttctctc 3840
 attccatgaagtatttcgatattctcagtaaacagatgtatagataactttgttcttcttctaaagaagcattcagatggaacatgacactgttctgttctaccatagataaata 3960
 acaagttgatccataggagcccataggaccctgctttagattgatttcaatgaaccagaaatgggtgaatctccagctgcagtgccctcattctggctcaccacaacgcgtttctctt 4080
 gctgatctctgtcttfaatggaacagtcataatfataatgaaatgttactgattctataagcaatatttctgtaagattatagtagaacttattctttagttagtggaccgttgcggga 4200
 agctaatctcttactacagatgcttggccatcaagtcagagttggctctctgtttttagtgaattttaaattggtccgtaagttaatccagactgggttagcttacaactg 4320
 aacggcgccgaacagggcagggcaggtttttagatgaggtgcatctgttctcactagcttgaacgagaacatgatcaagacatcagctgatctctcagctgtttactctac 4440
 ccggagatggagatggacactcggctcaatctcgtcagactctgctgtctcgggtgtcagcgtcagctcaaaagctt 4516

Figure 3. (A) Partial restriction map and sequencing strategy for GMACS-1. The protein coding sequence is indicated by the solid bars; 5' and 3' flanking sequences are indicated by lines. The arrows indicate the extent of each sequence determination. (B) Complete DNA sequence of GMACS-1 and its flanking genomic region. Coding regions are in uppercase letters; noncoding regions are in lowercase letters. The derived amino acid sequence is presented in the one-letter code below the DNA sequence. The putative CAAT and TATA boxes and potential polyadenylation signal sequences are underlined. The star identifies the stop codon.

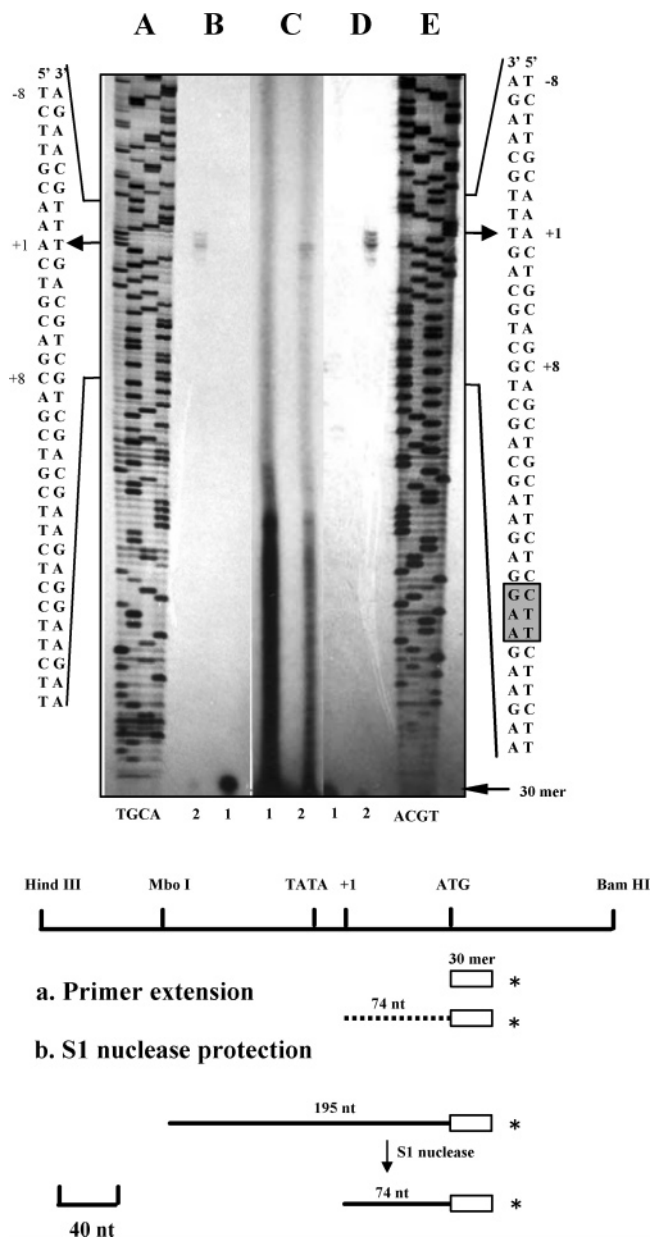


Figure 4. Determination of the transcription initiation site of GMACS-12. (A and E) Dideoxy sequencing reactions using acc1 as primer with a *Hind*III/*Bam*HI fragment from GMACS-12 and GMACS-9, respectively. (B and D) Primer extension analysis. A 5'-end-labeled 30-mer synthetic oligonucleotide, acc1, complementary to nucleotides +77 to +106, was hybridized with 2 μ g of mRNA from mature green fruit (lane 1) and ripening fruit (lane 2). (C) S1 nuclease protection. A 5'-labeled 195 nt single-stranded probe was used for S1 digestion with 2 μ g of mRNA from mature green fruit (lane 1) and ripening fruit (lane 2). Extra three bases (CTT) present in GMACS-9 compared with the corresponding region in GMACS-12 are boxed and shaded.

different stages of fruit ripening or from fruit postexposure for 24 h with various amounts of ethylene. The results are summarized in **Table 1**. Only *MACS1* gene expressed during fruit ripening and was inducible by exogenous ethylene treatment. The levels of *MACS1* mRNA accumulation during banana fruit ripening are shown in **Figure 5A**. The amount of mRNA was undetectable in mature green fruit; however, it increased dramatically at ripening stage 2 and reached a peak at ripening stage 5. A dose-dependent increase of *MACS1* gene expression was observed in mature green fruit after treatment with various amounts of ethylene for 24 h (**Figure 5B**). The inducible mRNA

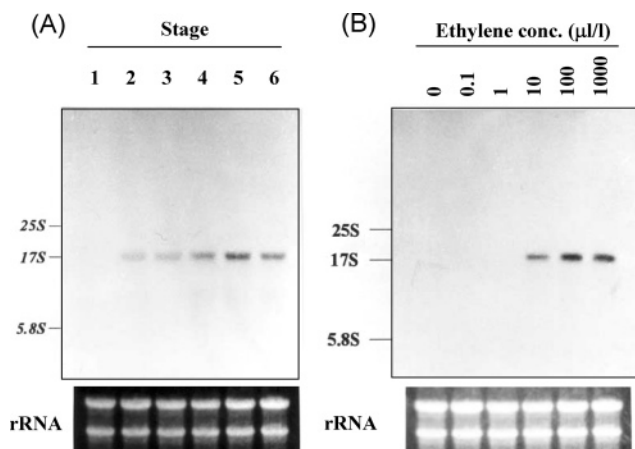


Figure 5. Expression of *MACS1* gene during various stages of fruit ripening (A) and in response to exogenous ethylene (B). Each lane was loaded with 25 μ g of total RNA isolated from peel tissue of banana fruit in different development stages (from stage 1 to stage 6) and from the peel tissue of mature green fruit after treatment with indicated concentrations of ethylene for 24 h. RNAs were electrophoretically separated on an agarose gel and blotted onto Hybond-N membrane. The level of rRNA was used as a reference to ensure equal loading of total RNA. The filter was hybridized with a 32 P-labeled gene-specific probe Facs5.

was detected with as little as 10 μ L/L of C_2H_4 and saturated at 100 μ L/L. The other five genes (*MACS2*, -3, -4, -5, and -7) were not detected by Northern analysis, suggesting that either these genes were not expressed or their expressions were at an extremely low level in banana fruit.

DISCUSSION

Recent studies revealed that ACC synthase gene expression is induced by a diverse group of inducers, including ethylene (6, 7, 21, 37, 38), auxin (11, 39–41), wounding (10, 42, 43), and flooding (9, 44). From these data, it can be argued that there are many ACC synthase genes to reflect the diversity of inducers. The existence of a multigene family in banana was confirmed by cloning nine classes of ACC synthase genes (**Table 1**). Southern analysis (**Figure 1**) indicated that they are located in different regions of the banana genome and exist as single-copy or low-copy genes in the banana genome. Northern analysis revealed that only the *MACS1* gene expresses during fruit ripening and was inducible by exogenous ethylene treatment, which indicates that *MACS1* is a significant member of the ACC synthase gene family related to ripening in banana fruit. This result was also found by Liu et al. (38). The other five genes (*MACS2*, -3, -4, -5, and -7) were not detected by Northern analysis. They can possibly express in other developmental stages of banana or be regulated by other inducers such as auxin or stress conditions. Their function remains to be proved.

Partial sequences of 16 genomic clones revealed a small difference among genes of the same class. We propose that this is due to allelic difference in the banana genome. Moreover, there is significant divergence (50–80%) between different classes of genes in banana. Similar studies in tomato (6, 7) and *Arabidopsis thaliana* (18, 45) have shown the same degree of divergence throughout the coding region of different ACC synthase genes. A dendrogram of nine banana ACC synthase gene fragments (Facs1, -2, -3, -4, -5, -8, -10, -44, and -52 corresponding to gene family *MACS2*, -5, -6, -7, -1, -8, -9, -4, and -3, respectively) isolated in this study, two banana ACC synthase genes (*MaACS5*, accession number AJ223186, and *Ma-*

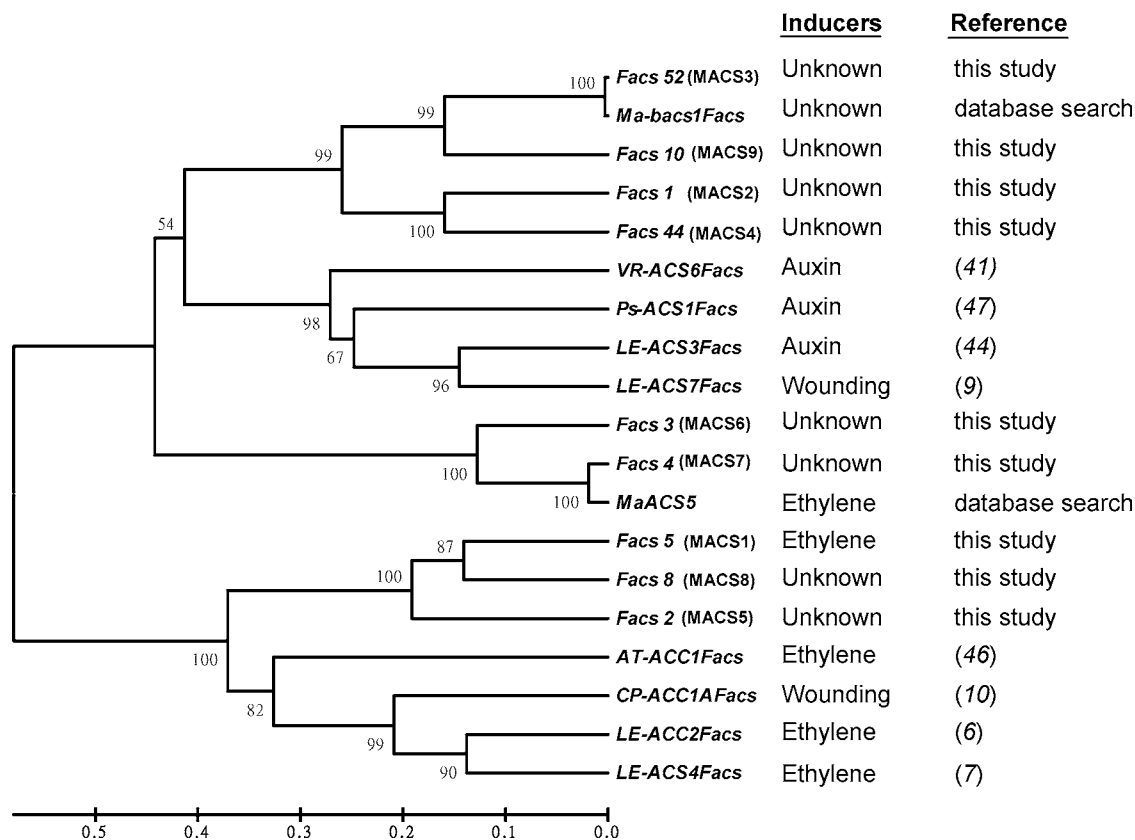


Figure 6. Nucleotide sequence-based dendrogram among nine banana ACC synthase gene fragments amplified by PCR using ACS1 and ACS2 as primers in this study (*Facs1*, -2, -3, -4, -5, -8, -10, -44, and -52), two banana ACC synthase genes (*MaACS5*, accession number AJ223186, and *Ma-bacs1*, accession number X96946) from database search, as well as eight ACC synthase genes with the same fragment from other species including zucchini *CP-ACC1A* (10), *Arabidopsis thaliana* *AT-ACC1* (46), tomato *LE-ACC2* (6), tomato *LE-ACS4* (7), tomato *LE-ACS7* (9), pea *Ps-ACS1* (47), and mungbean *VR-ACS6* (41). Nucleotide sequences were aligned using MEGA package and the UPGMA program. Scale bar and phylogenetic distances were calculated according to the number of differences. Numbers next to the node refer to the bootstrap values expressed as a percentage after 500 replicates. Only values >50% are presented.

bacs1, accession number X96946) from database search, as well as eight ACC synthase genes with the same fragment from other species including zucchini, tomato, *Arabidopsis*, pea, and mungbean was obtained using the MEGA package and the UPGMA program (<http://www.megasoftware.net>) and is shown in **Figure 6**. Phylogenetic analysis reveals that the genes fall into two branches. One major lineage contains *MACS1*, -5, and -8 isolated from banana in this study as well as *Arabidopsis AT-ACC1* (46), zucchini *CP-ACC1A* (10), tomato *LE-ACC2* (6), and *LE-ACS4* (7). Most of the genes in this sublineage are ethylene regulated, which indicates a striking correlation between their phylogenetic relationship and their pattern of expression. This result was also found by Lincoln et al. (7). The other major lineage contains three sublineages. The first one contains *MACS2*, -3, -4, and -9 isolated from banana in this study and another banana ACC synthase *Ma-bacs1* registered in the database, and among these *MACS3* shows high similarity (98%) to *Ma-bacs1*. The second one contains tomato *LE-ACS3* (44) and *LE-ACS7* (9), pea *Ps-ACS1* (47), and mungbean *VR-ACS6* (41); three of them are auxin regulated. The third one contains two banana ACC synthase genes (*MACS6* and -7) isolated in this study and one (*MaACS5*) from database search. Interestingly, *MACS7* also shows high similarity (96.4%) to *MaACS5*.

The structure of three ACC synthase genes of banana (GMACS-1, GMACS-9, and GMACS-12) contains four exons and three introns. The intron/exon junctions of GMACS-9 and GMACS-12, which are typical of donor and acceptor splice sites,

have been established by reference to pMACS-25 and pMACS-28, respectively, and the intron/exon junctions of GMACS-1 have been established by reference to other ACC synthase genes. ACC synthase genes can be divided into four classes based on the number and position of introns (6). They have either two, three, or four introns (**Figure 7**), but the position of each intron is exactly conserved among ACC synthase genes. Thus far, only zucchini ACC synthase (10) has four introns, and most ACC synthase genes including banana *MACS1* and *MACS2*, tomato *LE-ACC2* (6), *LE-ACS3* (44), and *Arabidopsis AT-ACC1* (46) contain three introns. Some genes contain two introns but at different sites. For example, *LE-ACS4* (7) and *LE-ACS7* (9) have intron II and intron III at corresponding positions, but *Ps-ACS1* (47) and *VR-ACS6* (41) have intron I and intron III.

Comparison of the 5' flanking sequence of GMACS-12 with those of other ethylene-regulated genes such as *E4*, *E8* (48), *HRGP* (49), *LE-ACC2* (6), and *MAO2* (50) shows that several sequences of 6–12 bp are identical in the GMACS-12 promoter (**Table 2**). Moreover, the sequence of the promoter was compared with a database of known *cis*-acting regulatory elements at the PlantCARE (51) (<http://sphinx.rug.ac.be:8080/PlantCARE/>). While some similarity with many elements was found in the search, exact matches were found for six particular elements. A G-box core (GCCACGTTGCA) appearing at position -1532 to -1522 (**Figure 2**) is identical with the core consensus element from sbp-CAM1 involved in light responsiveness (52). A second element (ATTTCAA) located at position -1117 to -1110 is also found in the promoter region

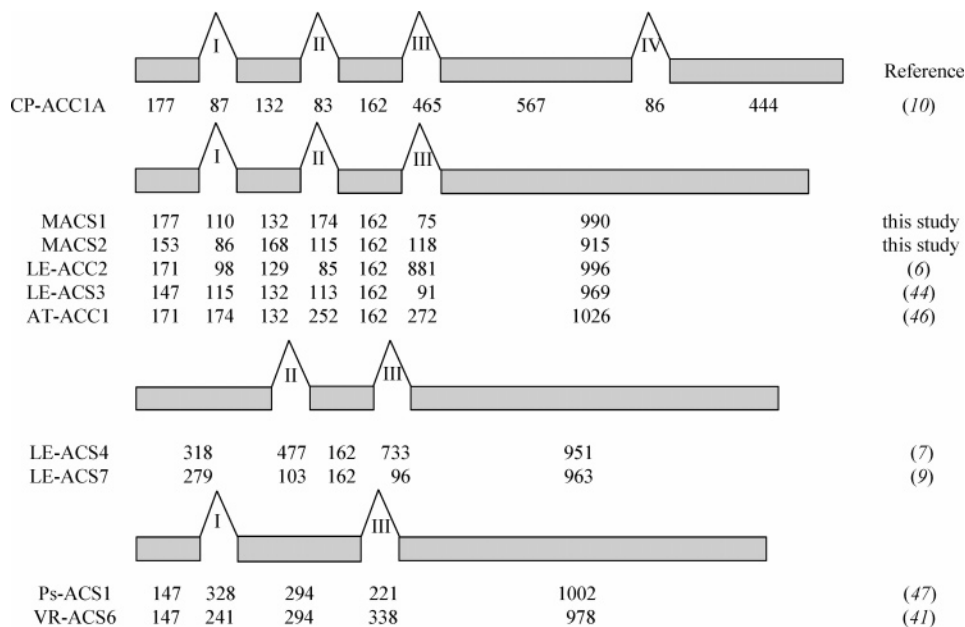


Figure 7. Schematic diagrams of different ACC synthase genes from banana (*MACS1* and *MACS2*, this study), tomato (*LE-ACC2*, *LE-ACS3*, *LE-ACS4*, and *LE-ACS7*), *Arabidopsis thaliana* (*AT-ACC1*), zucchini (*CP-ACC1A*), pea (*Ps-ACS1*), and mungbean (*VR-ACS6*). Protein-coding exons are indicated by boxes, and introns are indicated by bent lines. Numbers below boxes or lines represent the length of base pairs.

Table 2. Common Sequences Present in *MACS1*-Containing *GMACS-12* and Other Ethylene-Related Gene Promoters

ethylene-related gene	sequences	position of <i>GMACS-12</i>	ref
LE-ACC2	ATATTA	-1448 to -1443	6
	AAAGTA	-1236 to -1231	
	ACAAACAA	-1203 to -1196	
	AAGGCAA	-988 to -3982	
	TCCGATC	-868 to -8628	
	AACTTGA	-444 to -438	
	TTTTCC	-93 to -88	
MAO2	AACCCA	-1455 to -1450	50
	AATATT	-1447 to -1442	
	CACCAA	-1192 to -1187	
	AGATCATGC	-1104 to -1096	
	GTTTCT	-1088 to -1083	
	GATACG	-966 to -961	
	ACATGA	-776 to -771	
	AAAGGTG	-639 to -633	
	AAACTTTT	-604 to -597	
	TGCTTC	-568 to -563	
	AACACCTCA	-516 to -508	
	TACAAT	-297 to -262	
	CGAGTCGAAAG	-250 to -240	
ATGCCTAAT	-153 to -145		
GGAATCGACTC	-17 to -7		
E4	TTTCTAT	-962 to -956	48
	ATAAAGATATA	-924 to -913	
E8	CCGACAAAG	-1241 to -1233	48
HRGP	TATTTGTCGT	-188 to -179	49

of carnation *GST1*, which has been identified as an ethylene-responsive element (53). The sequence motif CGTCA which has been shown to be involved in methyl jasmonate-responsive expression for lipoxygenase 1 gene in barley grain (54) is found three times in the promoter of *GMACS12* at positions -768 to -764, -219 to -215, and -181 to -177. The sequence motif AACCTAA which was shown to be a MYB binding site involved in light responsiveness (55) is found at position -593 to -587 in the promoter of *GMACS12*. At position -550 to -542 the sequence CTACGTGAT is identical with the core consensus element from *cor15a* gene of *Arabidopsis thaliana* involved in abscisic acid responsiveness (56). Furthermore, the sequence motif TTGACC which has been identified as a fungal

elicitor-responsive element (57) is found twice in the promoter of *GMACS12*, namely, at positions -527 to -522 and -70 to -65. Besides, a GCC box homologous motif GCGGCC is found at position -209 to -204. The ethylene-responsive factors bind the GCC box (GCCGCC) element that is present in the promoters of many PR genes (58, 59). In all of these cases, their possible involvement in gene regulation and signal transduction remains to be proved.

Large losses of fruits are incurred due to ethylene's effects on plant senescence before they can reach the consumer. Therefore, the ability to manipulate the time of fruit ripening would reduce spoilage during shipping and storage and hence extend the shelf life of fruits (2, 3, 60). In this report we have characterized a diverse ACC synthase gene family in banana and identified an ACC synthase gene activated during fruit ripening and in ethylene-treated, mature green fruit. Several strategies of genetic engineering could be employed to reach the aim above, such as RNA interference of ACC synthase gene caused by antisense, sense, or hairpin construct (61). Furthermore, those constructs could be driven by fruit-specific and ethylene-inducible ACC synthase gene promoter to retard ripening of banana fruits and extend their storage life.

ACKNOWLEDGMENT

We are grateful to Dr. Jen-Jyh Liu for critical reading of the manuscript.

LITERATURE CITED

- (1) Abeles, F. B.; Morgan, P. W.; Saltveit, M. E., Jr. *Ethylene in Plant Biology*, 2nd ed.; Academic Press: New York, 1992.
- (2) Theologis, A. One rotten apple spoils the whole bushel: the role of ethylene in fruit ripening. *Cell* **1992**, *70*, 181-184.
- (3) Bleecker, A. B.; Kende, H. Ethylene: a gaseous signal molecule in plants. *Annu. Rev. Cell Dev. Biol.* **2000**, *16*, 1-18.
- (4) Yang, S. F.; Hoffman, N. E. Ethylene biosynthesis and its regulation in higher plants. *Annu. Rev. Plant Physiol.* **1984**, *35*, 155-189.

- (5) Adams, D. O.; Yang, S. F. Ethylene biosynthesis: identification of 1-aminocyclopropane-1-carboxylic acid as an intermediate in the conversion of methionine to ethylene. *Proc. Natl. Acad. Sci. U.S.A.* **1979**, *76*, 170–174.
- (6) Rottmann, W. H.; Peter, G. F.; Oeller, P. W.; Keller, J. A.; Shen, N. F.; Taylor, B. P.; Campbell, A. D.; Theologis, A. 1-Aminocyclopropane-1-carboxylate synthase in tomato is encoded by a multigene family whose transcription is induced during fruit and floral senescence. *J. Mol. Biol.* **1991**, *222*, 937–961.
- (7) Lincoln, J. E.; Campbell, A. D.; Oetiker, J.; Rottmann, W. H.; Oeller, P. W.; Shen, N. F.; Theologis, A. *LE-ACS4*, a fruit ripening and wound-induced 1-aminocyclopropane-1-carboxylate synthase gene of tomato (*Lycopersicon esculentum*). *J. Biol. Chem.* **1993**, *268*, 19422–19430.
- (8) Oetiker, J. H.; Olsen, D. C.; Shiu, O. Y.; Yang, S. F. Differential induction of seven 1-aminocyclopropane-1-carboxylic acid synthase genes by elicitor in suspension cultures of tomato (*Lycopersicon esculentum*). *Plant Mol. Biol.* **1997**, *34*, 275–286.
- (9) Shiu, O. Y.; Oetiker, J. H.; Yip, W. K.; Yang, S. F. The promoter of *LE-ACS7*, an early flooding-induced 1-aminocyclopropane-1-carboxylate synthase gene of the tomato, is tagged by a *Sol3* transposon. *Proc. Natl. Acad. Sci. U.S.A.* **1998**, *95*, 10334–10339.
- (10) Huang, P. L.; Parks, J. E.; Rottmann, W. H.; Theologis, A. Two genes encoding 1-aminocyclopropane-1-carboxylate synthase in zucchini (*Cucurbita pepo*) are clustered and similar but differentially regulated. *Proc. Natl. Acad. Sci. U.S.A.* **1991**, *88*, 7021–7025.
- (11) Botella, J. R.; Artega, J. M.; Schlagnhauser, C. D.; Artega, R. N.; Phillips, A. T. Identification and characterization of a full length cDNA encoding for an auxin-induced 1-aminocyclopropane-1-carboxylate synthase from etiolated mung bean hypocotyl segments and expression of its mRNA in response to indole-3-acetic acid. *Plant Mol. Biol.* **1992**, *20*, 425–436.
- (12) Zarembinski, T. I.; Theologis, A. Anaerobiosis and plant growth hormones induce two genes encoding 1-aminocyclopropane-1-carboxylate synthase in rice (*Oryza sativa* L.). *Mol. Biol. Cell* **1993**, *4*, 363–373.
- (13) Beltran-Destefano, L. G. C.; Caeneghem, W. V.; Gielen, J.; Richard, L.; van Montagu, M.; van der Straeten, D. Characterization of three members of the ACC synthase gene family in *Solanum tuberosum* L. *Mol. Gen. Genet.* **1995**, *246*, 496–508.
- (14) ten Have, A.; Woltering, E. J. Ethylene biosynthetic genes are differentially expressed during carnation (*Dianthus caryophyllus* L.) flower senescence. *Plant Mol. Biol.* **1997**, *34*, 89–97.
- (15) Avni, A.; Bailey, B. A.; Mattoo, A. K.; Anderson, J. D. Induction of ethylene biosynthesis in *Nicotiana tabacum* by a *Trichoderma viride* xylanase is correlated to the accumulation of 1-aminocyclopropane-1-carboxylic acid (ACC) synthase and ACC oxidase transcripts. *Plant Physiol.* **1994**, *106*, 1049–1055.
- (16) Ge, L.; Liu, J. Z.; Wong, W. S.; Hsiao, W. L. W.; Chong, K.; Xu, Z. K.; Yang, S. F.; Kung, S. D.; Li, N. Identification of novel multiple environmental factor-responsive 1-aminocyclopropane-1-carboxylate synthase gene, *NT-ACS2*, from tobacco. *Plant Cell Environ.* **2000**, *23*, 1169–1182.
- (17) Takahashi, H.; Iwasa, T.; Shinkawa, T.; Kawahara, A.; Kurusu, T.; Inoue, Y. Isolation and characterization of the ACC synthase genes from lettuce (*Lactuca sativa* L.), and the involvement in low pH-induced root hair initiation. *Plant Cell Physiol.* **2003**, *44*, 62–69.
- (18) Yamagami, T.; Tsuchisaka, A.; Yamada, K.; Haddon, W. F.; Harden, L. A.; Theologis, A. Biochemical diversity among the 1-aminocyclopropane-1-carboxylate synthase isozymes encoded by the *Arabidopsis* gene family. *J. Biol. Chem.* **2003**, *278*, 49102–49112.
- (19) Beaudry, R. M.; Paz, A. N.; Black, C. C.; Kays, S. J. Banana ripening: implications of changes in internal ethylene and CO₂ concentrations, pulp fructose 2,6-bisphosphate concentration, and activity of some glycolytic enzymes. *Plant Physiol.* **1987**, *85*, 277–282.
- (20) Beaudry, R. M.; Severon, R. F.; Black, C. C.; Kays, S. J. Banana ripening: implications of changes in glycolytic intermediate concentrations, glycolytic and gluconeogenic carbon flux, and fructose 2,6-bisphosphate concentration. *Plant Physiol.* **1989**, *91*, 1436–1444.
- (21) Deikman, J.; Fischer, R. L. Interaction of a DNA binding factor with the 5'-flanking region of an ethylene-responsive fruit ripening gene from tomato. *EMBO J.* **1988**, *7*, 3315–3320.
- (22) Gu, Y. Q.; Yang, C.; Thara, V. K.; Zhou, J.; Martin, G. B. *Pti4* is induced by ethylene and salicylic acid, and its product is phosphorylated by the Pto kinase. *Plant Cell* **2000**, *12*, 771–786.
- (23) Chakravarthy, S.; Tuori, R. P.; D'Ascenzo, M. D.; Fobert, P. R.; Despres, C.; Martin, G. B. The tomato transcription factor *Pti4* regulates defense-related gene expression via GCC box and non-GCC box *cis* elements. *Plant Cell* **2003**, *15*, 3033–3050.
- (24) Wang, N. N.; Shih, M.-C.; Li, N. The GUS reporter-aided analysis of the promoter activities of *Arabidopsis* ACC synthase genes *AtACS4*, *AtACS5*, and *AtACS7* induced by hormones and stresses. *J. Exp. Bot.* **2005**, *56*, 909–920.
- (25) Commonwealth Scientific and Industrial Research Organization (CSIRO). *Banana ripening guide*; CSIRO Division of Food Research: 1972; Circular, 8, pp 1–12.
- (26) Dellaporta, S. L.; Wood, L.; Hicks, J. B. A plant DNA miniprep: Version II. *Plant Mol. Biol. Rep.* **1983**, *1*, 19–21.
- (27) Frischauf, A. M.; Lehrach, H.; Poustka, A.; Murray, N. Lambda replacement vector carrying polylinker sequences. *J. Mol. Biol.* **1983**, *170*, 827–842.
- (28) Benton, W. D.; Davis, R. W. Screening λ gt recombinant clones by hybridization to single plaques *in situ*. *Science* **1977**, *196*, 180–182.
- (29) Lysák, M. A.; Doleželová, M.; Horry, J. P.; Swennen, R.; Doležel, J. Flow cytometric analysis of nuclear DNA content in *Musa*. *Theor. Appl. Genet.* **1999**, *98*, 1344–1350.
- (30) Clark, L.; Carbon, J. Biochemical construction and selection of hybrid plasmids containing specific segments of the *Escherichia coli* genome. *Proc. Natl. Acad. Sci. U.S.A.* **1975**, *72*, 4361–4365.
- (31) Sambrook, J.; Fritsch, E. F.; Maniatis, T. *Molecular Cloning: A Laboratory Manual*, 2nd ed.; Cold Spring Harbor Laboratory Press: Cold Spring Harbor, NY, 1989.
- (32) Sanger, F.; Nicklen, S.; Coulson, A. R. DNA sequencing with chain-termination inhibitors. *Proc. Natl. Acad. Sci. U.S.A.* **1977**, *74*, 5463–5467.
- (33) Bond, B. J.; Davidson, N. The *Drosophila melanogaster* actin 5C gene uses two transcription start sites and three polyadenylation sites to express multiple mRNA species. *Mol. Cell Biol.* **1986**, *6*, 2080–2088.
- (34) Buchman, A.; Fromm, M.; Berg, P. Complex regulation of simian virus 40 early-region transcription from different overlapping promoters. *Mol. Cell Biol.* **1984**, *4*, 1900–1914.
- (35) Feinberg, A. P.; Vogelstein, B. A technique for radiolabeling DNA restriction endonuclease fragments to high specific activity. *Anal. Biochem.* **1983**, *132*, 6–13.
- (36) Taylor, B.; Powell, A. Isolation of plant DNA and RNA. *Focus* **1982**, *4*, 4–6.
- (37) Dong, J. G.; Kim, W. T.; Yip, W. K.; Thompson, G. A.; Li, L.; Bennett, A. B.; Yang, S. F. Cloning of cDNA encoding 1-aminocyclopropane-1-carboxylate synthase and expression of its mRNA in ripening apple fruit. *Planta* **1991**, *185*, 38–45.
- (38) Liu, X.; Shiomi, S.; Nakatsuka, A.; Kubo, Y.; Nakamura, R.; Inaba, A. Characterization of ethylene biosynthesis associated with ripening in banana fruit. *Plant Physiol.* **1999**, *121*, 1257–1265.
- (39) Yip, W. K.; Moore, T.; Yang, S. F. Differential accumulation of transcripts for four tomato 1-aminocyclopropane-1-carboxylate synthase homologs under various conditions. *Proc. Natl. Acad. Sci. U.S.A.* **1992**, *89*, 2475–2479.

- (40) Abel, S.; Nguyen, M. D.; Chow, W.; Theologis, A. *ACS4*, a primary indoleacetic acid-responsive gene encoding 1-aminocyclopropane-1-carboxylate synthase gene in *Arabidopsis thaliana*. Structural characterization, expression in *Escherichia coli*, and expression characteristics in response to auxin. *J. Biol. Chem.* **1995**, *270*, 19093–19099.
- (41) Yoon, I. S.; Park, D. H.; Mori, H.; Imaseki, H.; Kang, B. G. Characterization of an auxin-inducible 1-aminocyclopropane-1-carboxylate synthase gene, *VR-ACS6*, of mungbean (*Vigna radiata* (L.) Wilczek) and hormonal interactions on the promoter activity in transgenic tobacco. *Plant Cell Physiol.* **1999**, *40*, 431–438.
- (42) van der Straeten, D.; Wiemeersch, L. V.; Goodman, H. M.; van Montagu, M. Cloning and sequence of two different cDNAs encoding 1-aminocyclopropane-1-carboxylate synthase in tomato. *Proc. Natl. Acad. Sci. U.S.A.* **1990**, *87*, 4859–4853.
- (43) Nakajima, N.; Mori, H.; Yamazaki, K.; Imaseki, H. Molecular cloning and sequence of a complementary DNA encoding 1-aminocyclopropane-1-carboxylate synthase induced by tissue wounding. *Plant Cell Physiol.* **1990**, *31*, 1021–1029.
- (44) Olsen, D. C.; Oetiker, J. H.; Yang, S. F. Analysis of *LE-ACS3*, a 1-aminocyclopropane-1-carboxylate acid synthase gene expressed during flooding in the roots of tomato plants. *J. Biol. Chem.* **1995**, *270*, 14056–14061.
- (45) Liang, X.; Abel, S.; Keller, J. A.; Shen, N. F.; Theologis, A. The 1-aminocyclopropane-1-carboxylate synthase gene family of *Arabidopsis thaliana*. *Proc. Natl. Acad. Sci. U.S.A.* **1992**, *89*, 11046–11050.
- (46) van der Straeten, D.; Rodrigues-Pousada, R. A.; Villarreal, R.; Hanley, S.; Goodman, H. M.; van Montagu, M. Cloning, genetic mapping, and expression analysis of an *Arabidopsis thaliana* gene that encodes 1-aminocyclopropane-1-carboxylate synthase. *Proc. Natl. Acad. Sci. U.S.A.* **1992**, *89*, 9969–9973.
- (47) Peck, S. C.; Kende, H. A gene encoding 1-aminocyclopropane-1-carboxylate (ACC) synthase produces two transcripts: elucidation of a conserved response. *Plant J.* **1998**, *14*, 573–581.
- (48) Cordes, S.; Deikman, J.; Margossian, L. J.; Fischer, R. L. Interaction of a developmentally regulated DNA-binding factor with sites flanking two different fruit-ripening genes from tomato. *Plant Cell* **1989**, *1*, 1025–1034.
- (49) Holdsworth, M. J.; Laties, G. G. Site-specific binding of a nuclear factor to the carrot extension gene is influenced by both ethylene and wounding. *Planta* **1989**, *179*, 17–23.
- (50) Huang, P.-L.; Do, Y.-Y.; Huang, F.-C.; Thay, T.-S.; Chang, T.-W. Characterization and expression analysis of a banana gene encoding 1-aminocyclopropane-1-carboxylate oxidase. *Biochem. Mol. Biol. Int.* **1997**, *41*, 941–950.
- (51) Lescot, M.; Dehais, P.; Thijs, G.; Marchal, K.; Moreau, Y.; van der Peer, Y.; Rouze, P.; Rombauts, S. PlantCARE, a database of plant *cis*-acting regulatory elements and a portal to tools for *in silico* analysis of promoter sequences. *Nucleic Acids Res.* **2002**, *30*, 325–327.
- (52) Arguello-Astorga, G. R.; Herrera-Estrella, L. R. Ancestral multipartite units in light-responsive plant promoters have structural features correlating with specific phototransduction pathways. *Plant Physiol.* **1996**, *112*, 1151–1166.
- (53) Itzhaki, H.; Maxson, J. M.; Woodson, W. R. An ethylene responsive enhancer element is involved in the senescence-related expression of the carnation glutathione-S-transferase (GST1) gene. *Proc. Natl. Acad. Sci. U.S.A.* **1994**, *91*, 8925–8929.
- (54) Rouster, J.; Leah, R.; Mundy, J.; Cameron-Mills, V. Identification of a methyl jasmonate-responsive region in the promoter of a lipoxygenase 1 gene expressed in barley grain. *Plant J.* **1997**, *11*, 513–523.
- (55) Feldbrugge, M.; Sprenger, M.; Hahlbrock, K.; Weisshaar, B. PcMYB1, a novel plant protein containing a DNA-binding domain with one MYB repeat, interacts *in vivo* with a light-regulatory promoter unit. *Plant J.* **1997**, *11*, 1079–1093.
- (56) Baker, S. S.; Wilhelm, K. S.; Thomashow, M. F. The 5'-region of *Arabidopsis thaliana cor15a* has *cis*-acting elements that confer cold-, drought- and ABA-regulated gene expression. *Plant Mol. Biol.* **1994**, *24*, 701–713.
- (57) Rushton, P. J.; Torres, J. T.; Parniske, M.; Wernert, P.; Hahlbrock, K.; Somssich, I. E. Interaction of elicitor-induced DNA-binding proteins with elicitor response elements in the promoters of parsley PR1 genes. *EMBO J.* **1996**, *15*, 5690–5700.
- (58) Buettner, M.; Singh, K. B. *Arabidopsis thaliana* ethylene-responsive element binding protein (ATEBP), an ethylene-inducible, GCC box DNA-binding protein interacts with an ocs element binding protein. *Proc. Natl. Acad. Sci. U.S.A.* **1997**, *94*, 5961–5966.
- (59) Gu, Y. Q.; Wildermuth, M. C.; Chakravarthy, S.; Loh, Y. T.; Yang, C.; He, X.; Han, Y.; Martin, G. B. Tomato transcription factors Pti4, Pti5, and Pti6 activate defense responses when expressed in *Arabidopsis*. *Plant Cell* **2002**, *14*, 817–831.
- (60) Zarembinski, T.; Theologis, A. Ethylene biosynthesis and action: a case of conservation. *Plant Mol. Biol.* **1994**, *26*, 1579–1597.
- (61) Waterhouse, P. M.; Wang, M.-B.; Finnegan, E. J. Role of short RNAs in gene silencing. *Trends Plant Sci.* **2001**, *6*, 297–301.

Received for review January 1, 2006. Revised manuscript received March 22, 2006. Accepted March 31, 2006. This work was supported by Grants 95AS-6.1.3-FD-Z1 and 94AS-5.1.4-FD-Z1 from the Council of Agriculture, Republic of China.

JF060001W